

- DQ5 Sheppardson



Lead Is Key



Prepared by

Board #

Overview

- Mechanics/Positioning Goals
- Transition From Trail to Lead
- Initial Starting Positions (ISP)
- Primary Coverage Area (PCA)
- A, B & C Positions
- Co2 Ballside/C “Visual Cues”
- Co3 Rotation Thoughts
- Transition from Lead to Trail



Positioning Goals

- Put officials in the best position(s) to officiate the game
- Clarify “who” is responsible for “what” and “when”
- Have the “right” official, in the “right” position, to make the “right” call
 - ODDS of making the correct call/ruling INCREASE when in the right position
- Manuals are a GREAT “guide” for where to be...
 - Deviate as “needed,” not b/c you don’t know the manual



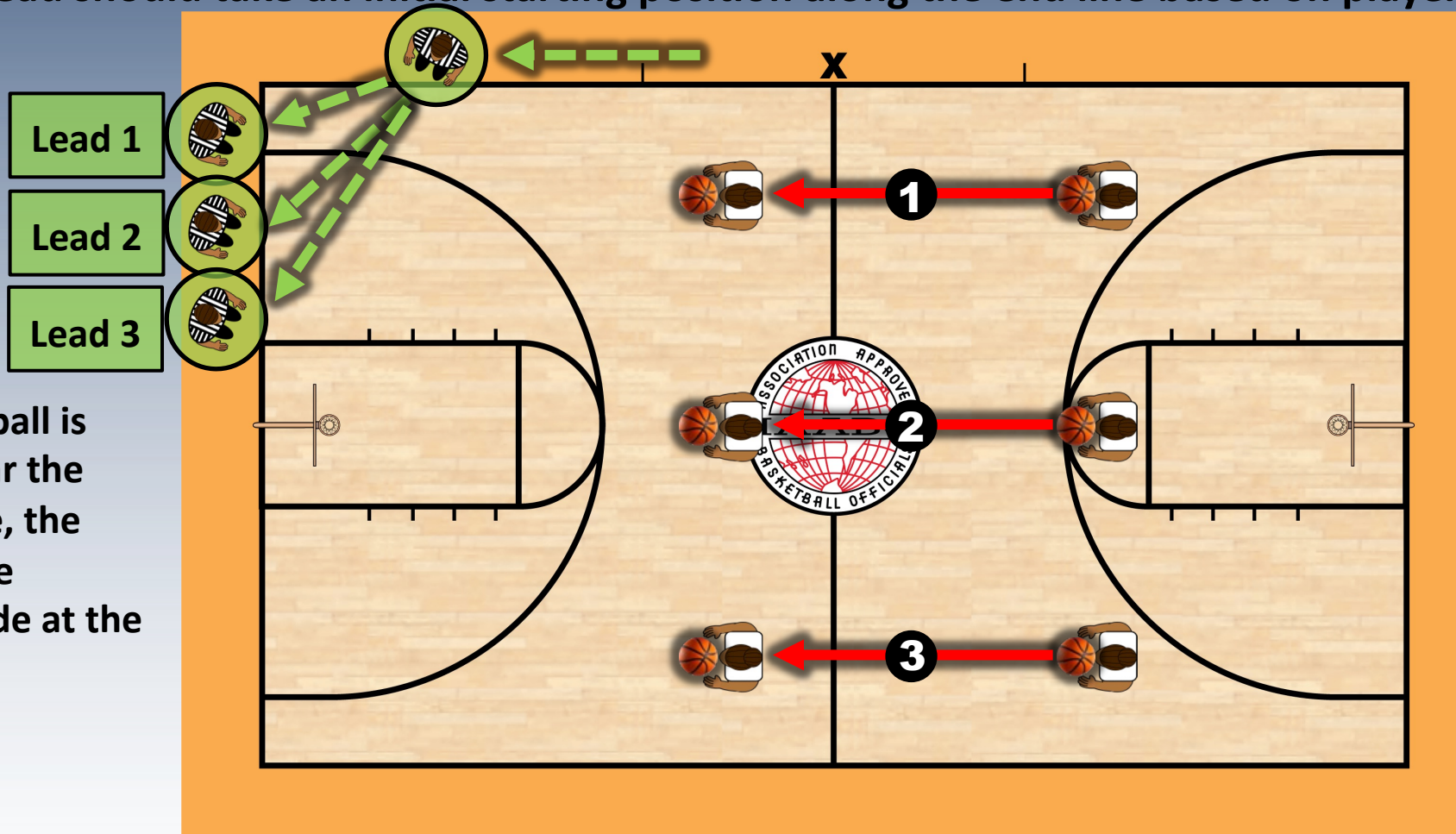
Transition from “Old” Trail to “New” Lead

- DO NOT “bail out” as Trail...
- RUN looking “back” over your “inside” shoulder
- Get “just ahead” of the player “farthest” down the court...RUN
- You have “first wave” of players...look for developing “match-ups”
- IF you CANNOT beat the players... “Button hook” and officiate from BEHIND the play
- How you get to the endline depends on WHERE the players are...NEXT SLIDE



The Lead Initial Starting Position in Transition

The Lead should take an initial starting position along the end line based on player and ball location.



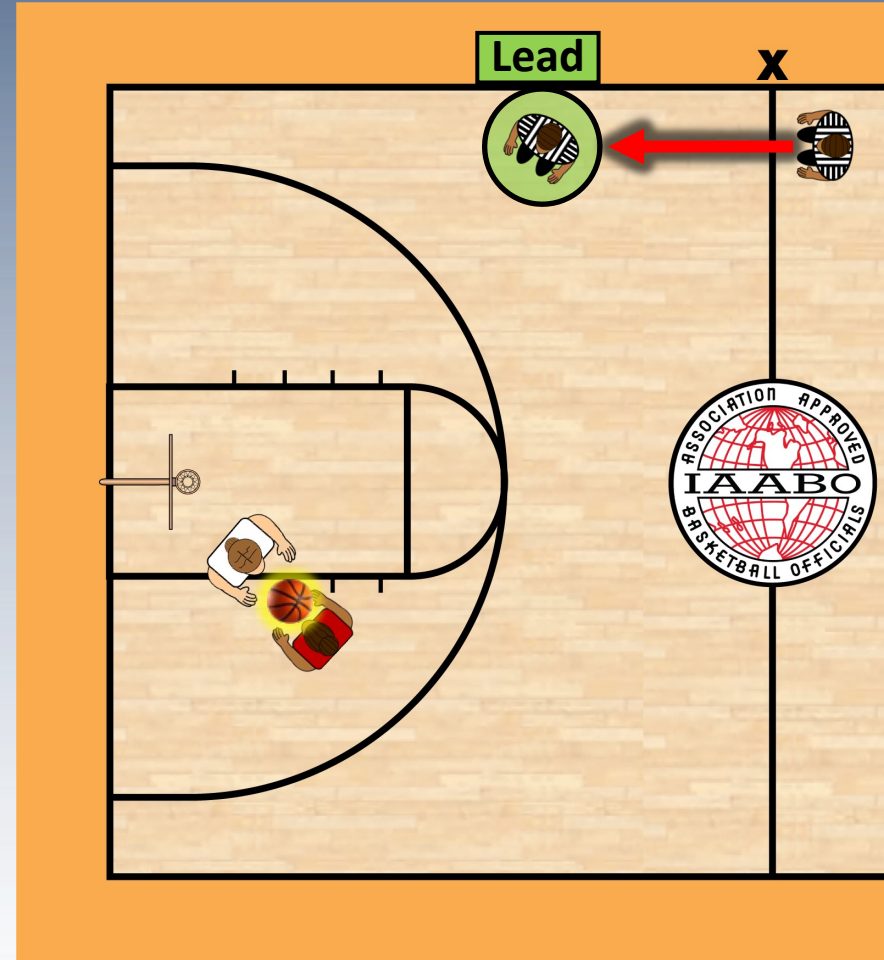
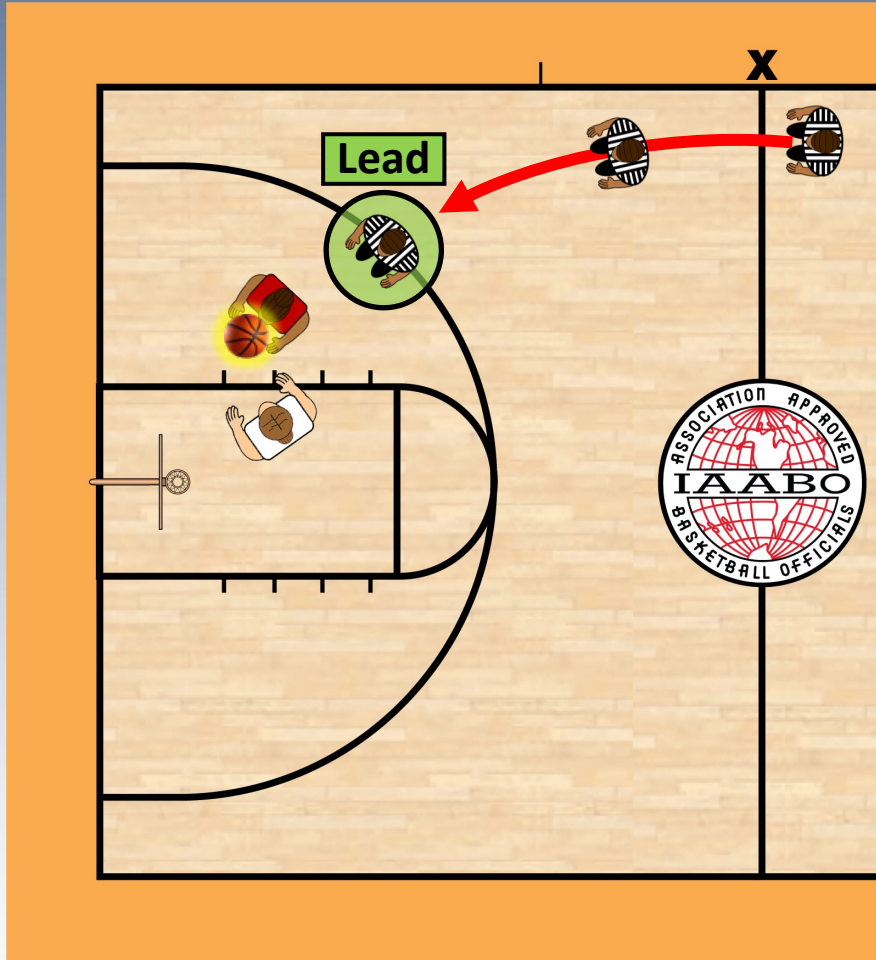
1) When the ball is advancing near the Lead's sideline, the Lead should be positioned wide at the "A" position.

2) When the ball is advancing in the middle of the court, the Lead should be positioned between the "A" and "B" positions.

3) When the ball is advancing on the opposite sideline, the Lead should "cut the corner" and move directly to the "B" position and be ready for possible position-adjustment to the C position when the Trail enters the frontcourt.



The Lead in Transition: “Button Hook”

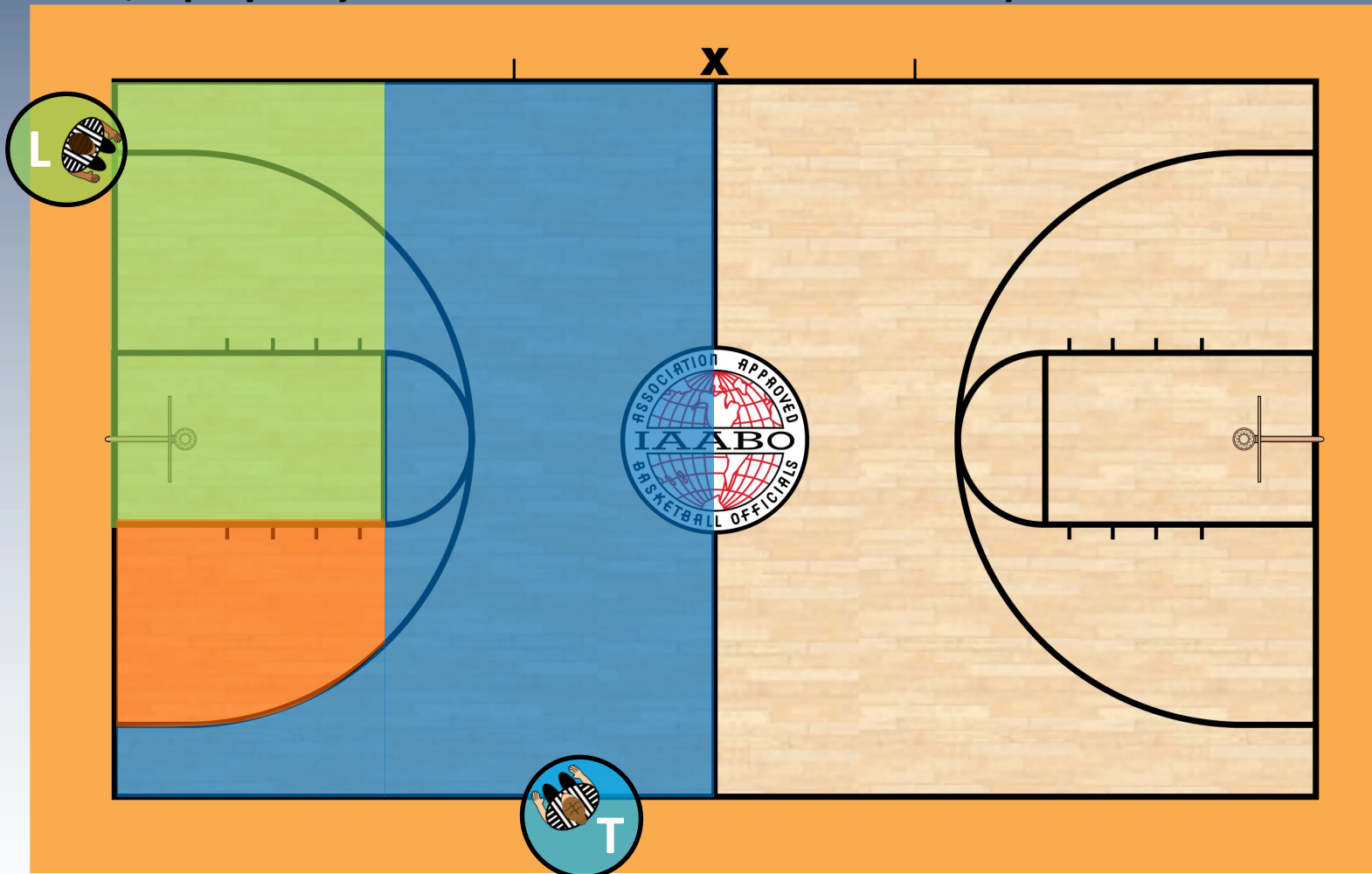


If it is not possible to be ahead of the play, the Lead should attempt to get an open look by “trailing the play” on potential contact situations in transition.



Primary Coverage Area (PCA)

At times, a play may necessitate a crew member to expand their field of vision.



Green – Lead's PCA

Blue – Trail's PCA

Orange – Dual or Lead Expanded Coverage

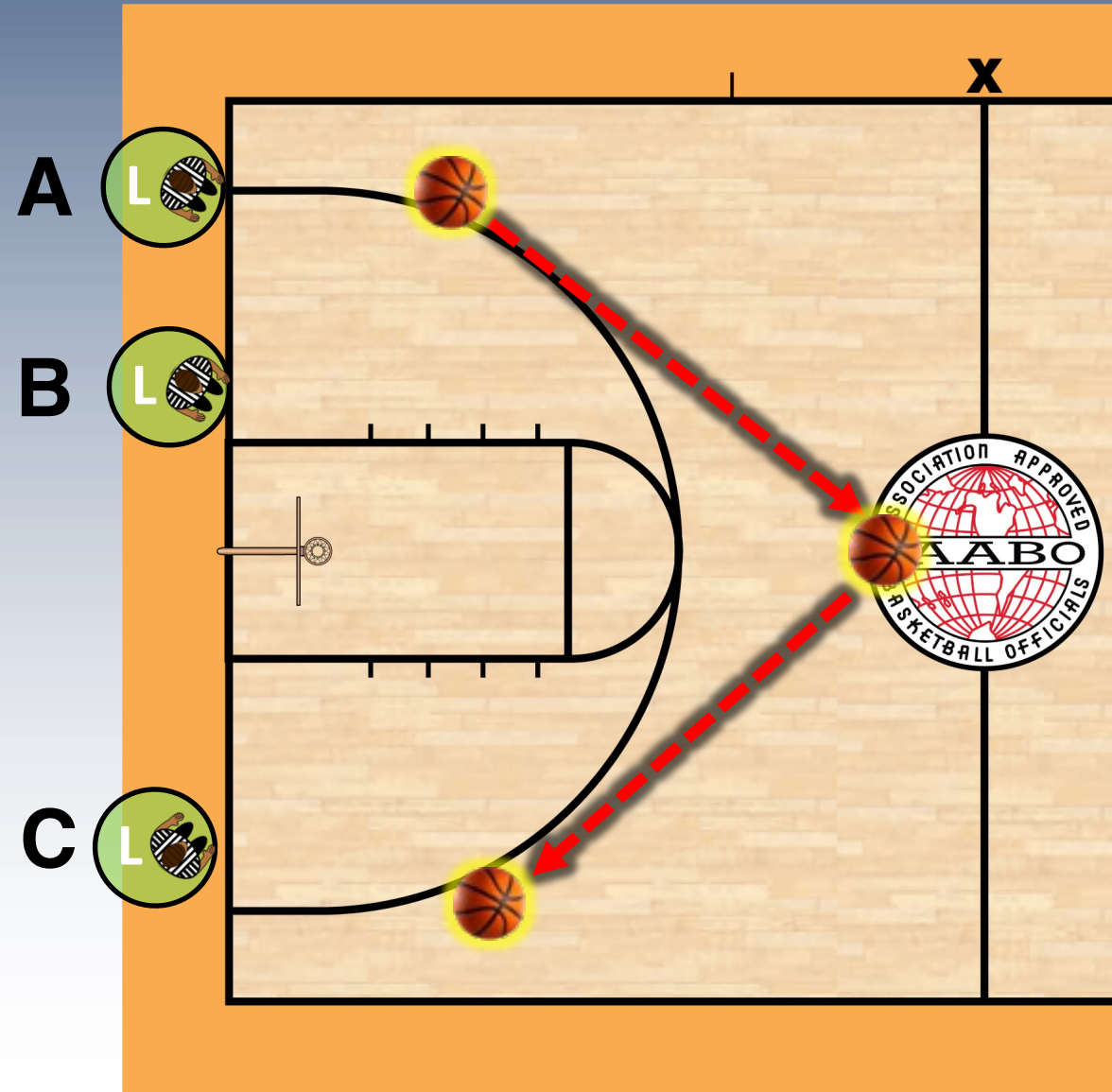


“A,” “B,” & “C/Ballside” Mechanics

A - If the ball is on the Lead’s side of basket line.

B – If the ball moves toward basket line, the Lead should consider “**closing down**” toward the lane.

C – If the ball crosses the basket line, the Lead may move to the “**ballside**” to improve coverage.



Need to KNOW and UNDERSTAND the last slide

Body should “mirror” the location of the ball

- “A” position
 - Body/shoulders 45-degrees to post
- “B” position
 - Body/shoulders parallel with endline



LEAD "CLOSE DOWN" (VIDEO)



“C” Position aka “Ballside”

WHEN to go “ballside” or the “C” position?...VISUAL Cues

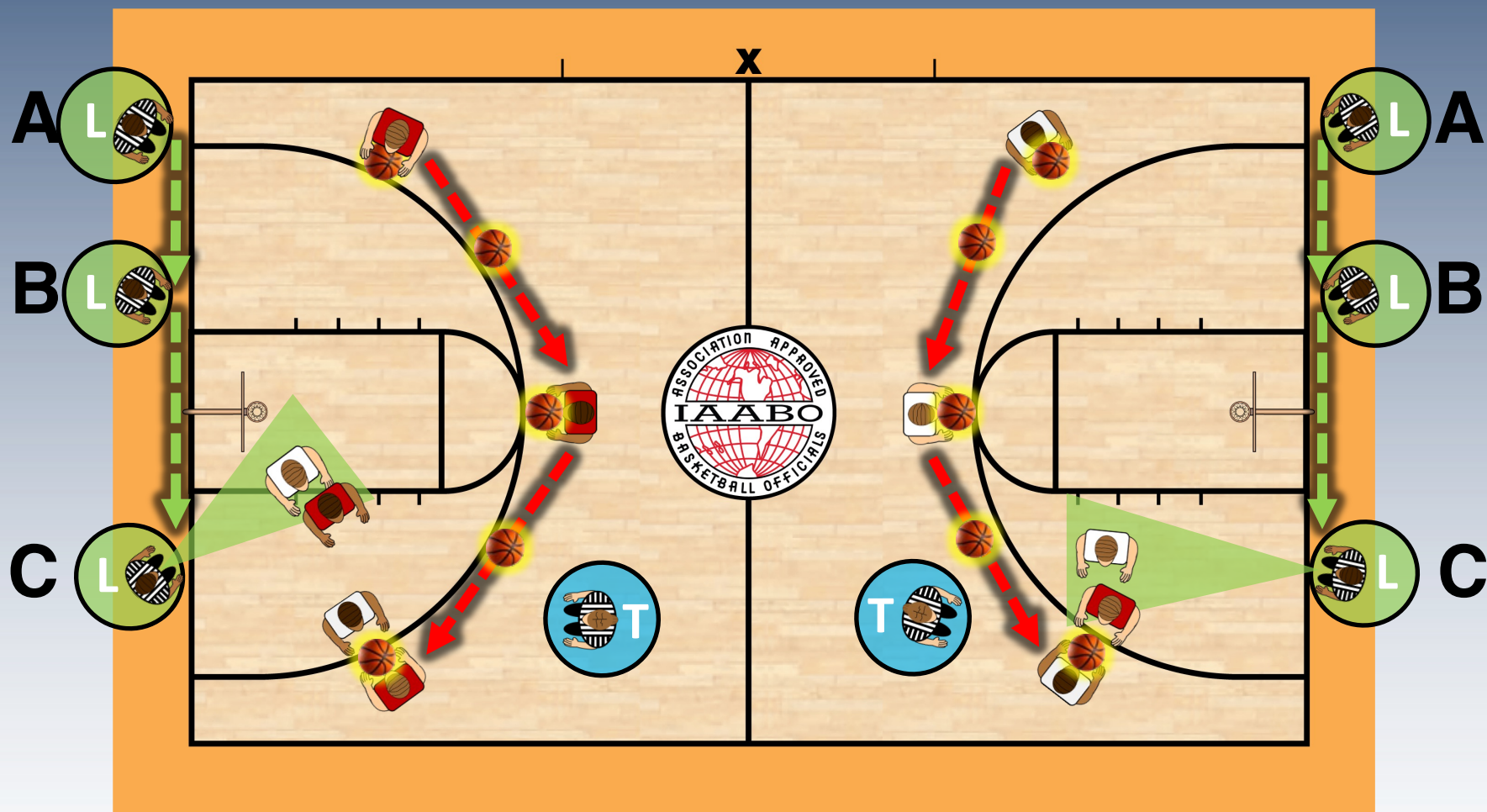
- Ball is settled on the WING **and** POST play is an option
- Get to the “C” position BEFORE the entry pass to the post

OR

- Screening activity in Trail’s PCA **and** NO “active matchup” in your PCA



“C” or “Ballside Mechanic



The Lead moves across lane-extended area to get an open angle on low post matchup.

The Lead moves across lane-extended area to assist the Trail with screening activity

The Lead should close down toward lane (B position) when ball moves toward basketline. When the ball and either low post play and/or screening activity develops in the Trail's PCA, the Lead should move across lane-extended area (C position) to assist with coverage.



Ball side Mechanic (VIDEO)

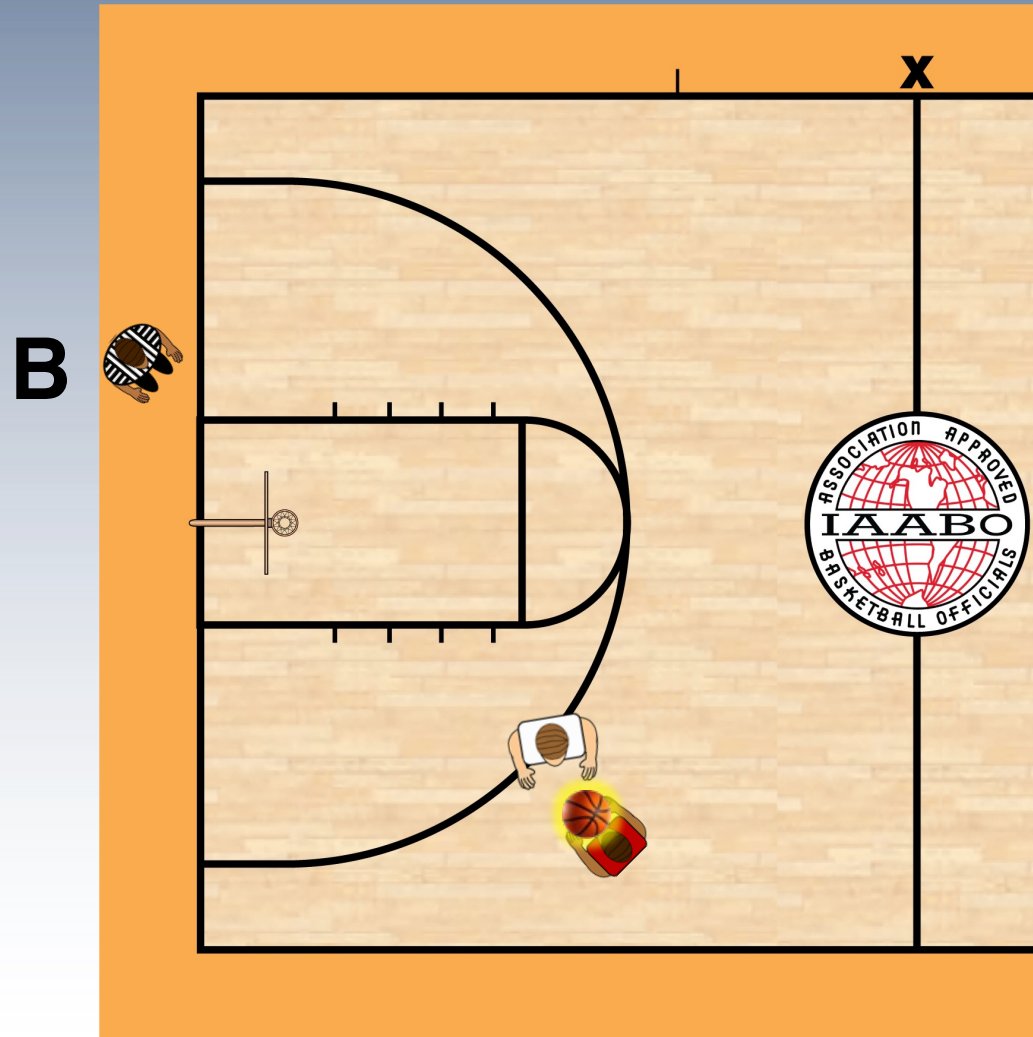


WHY **BOTH** Those Visual Cues?



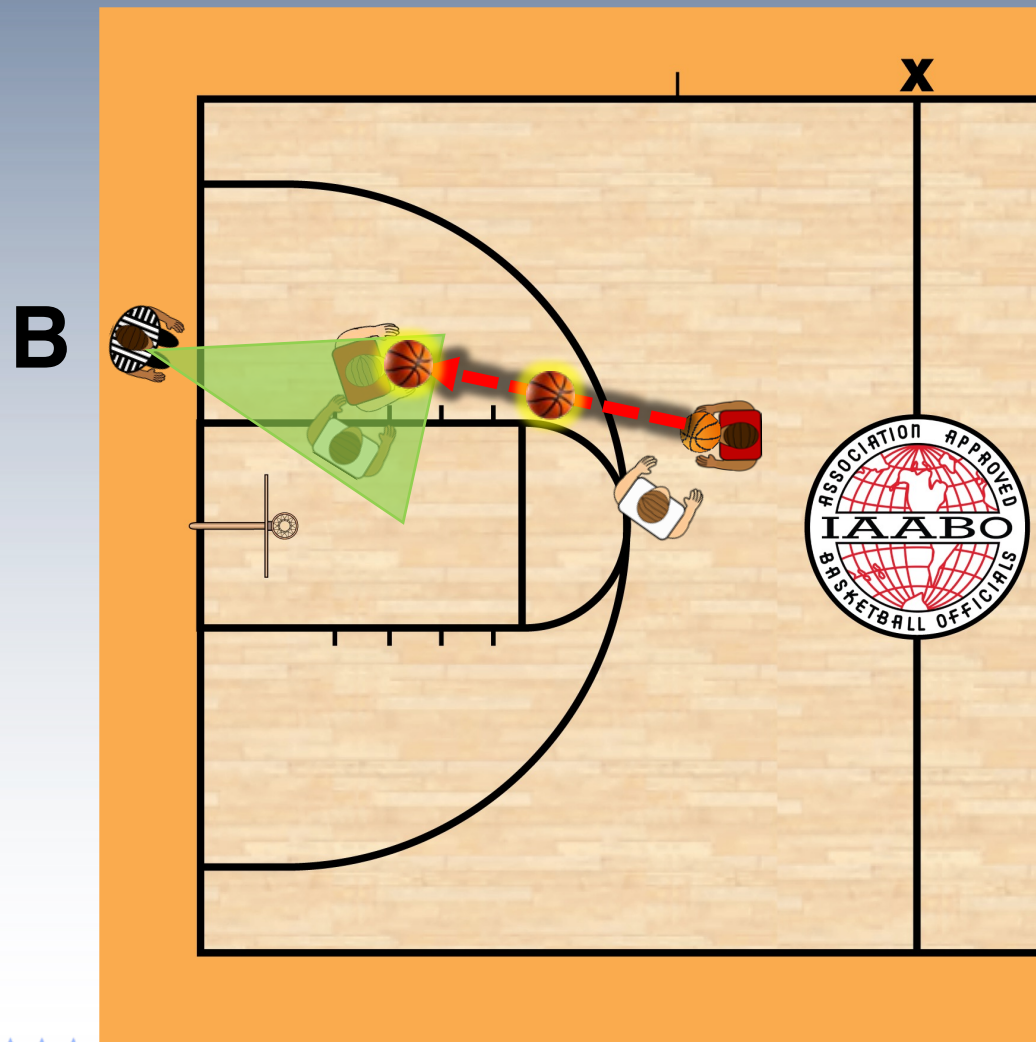
BALL ON WING – NO POST PLAY

- “Most likely” there’ll be a drive, shot or skip pass...you’re in good position at “B”



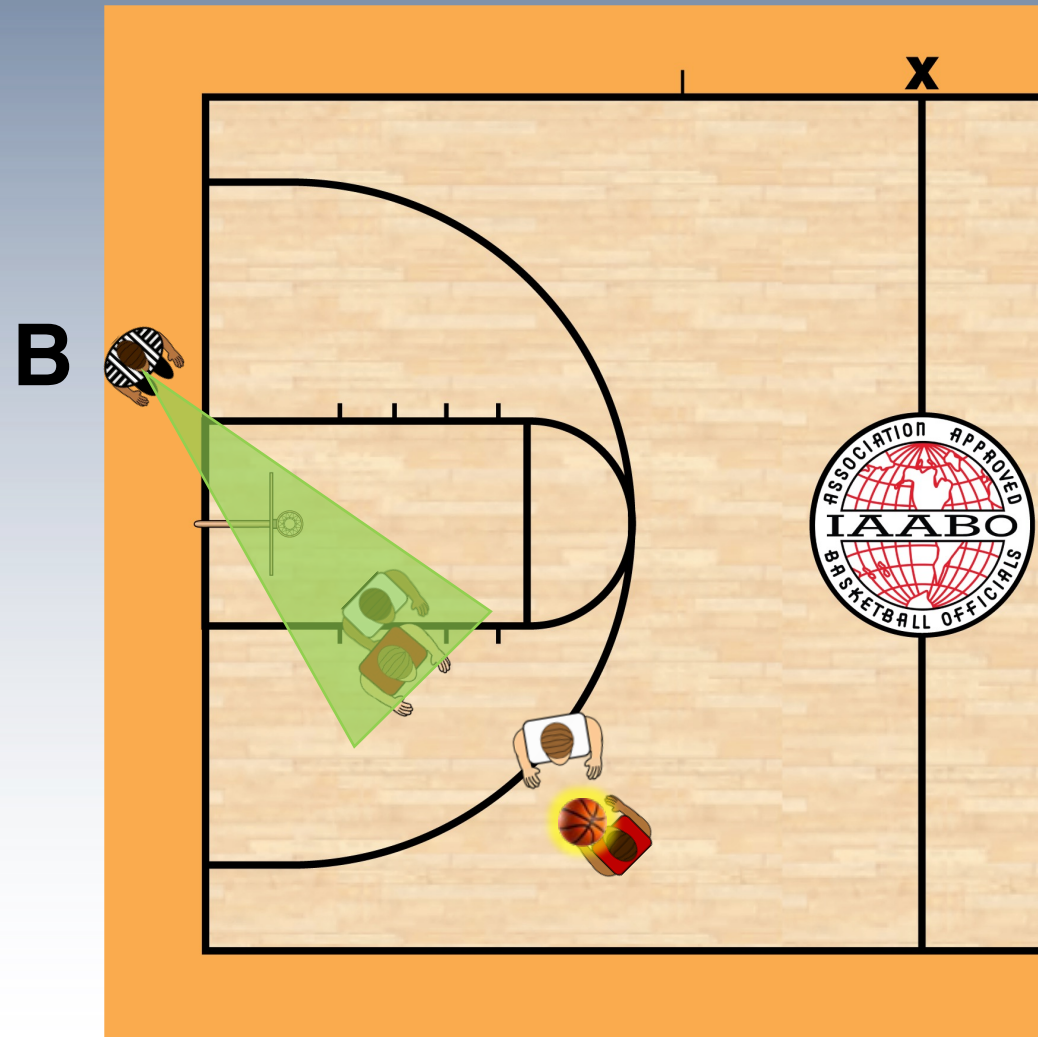
POST PLAY – BALL IN MIDCOURT AREA

- Entry pass to post...from “B” you’ll have an “open” look at the post players



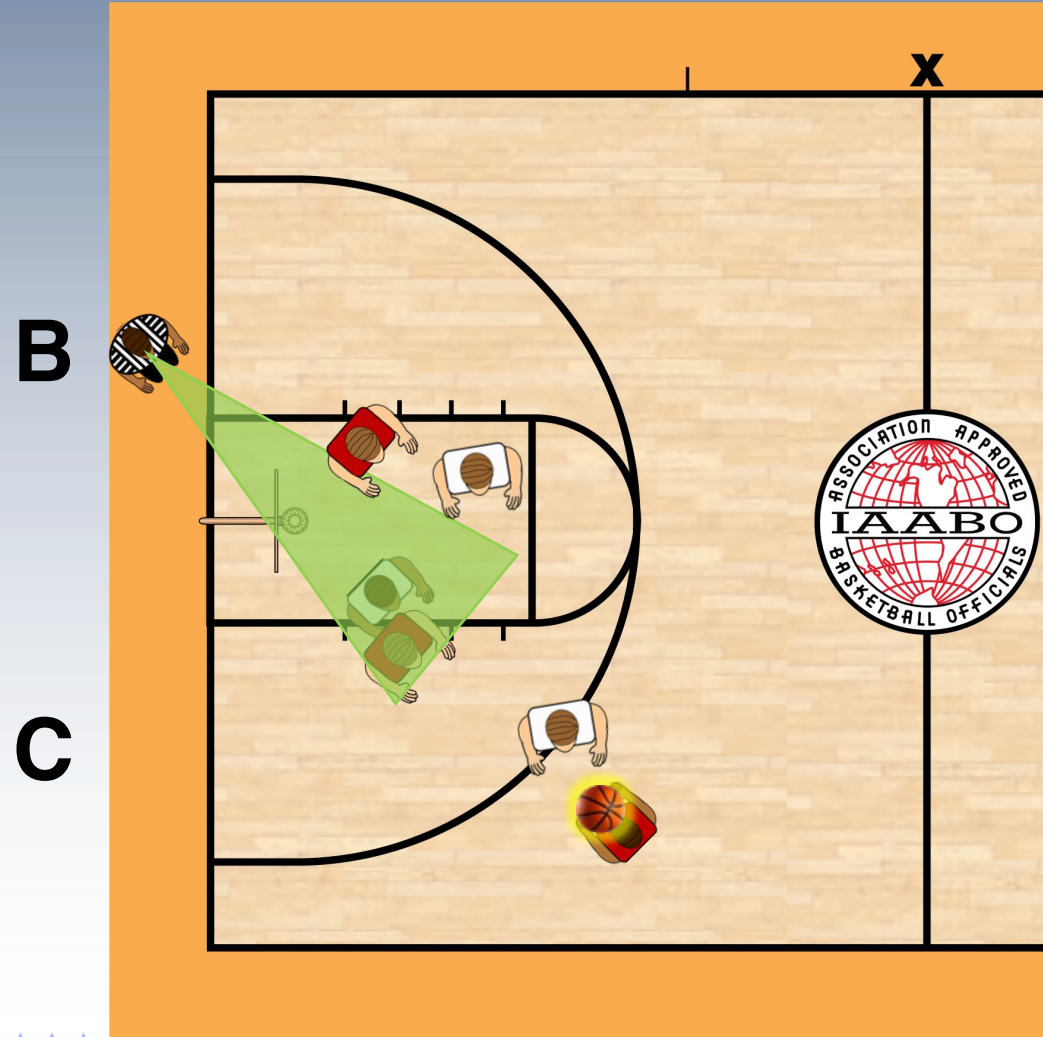
BALL ON WING **AND** POST PLAY

- IF you **don't go** "Ballside/C" ...you have a perfect "straight-line" or "closed" look



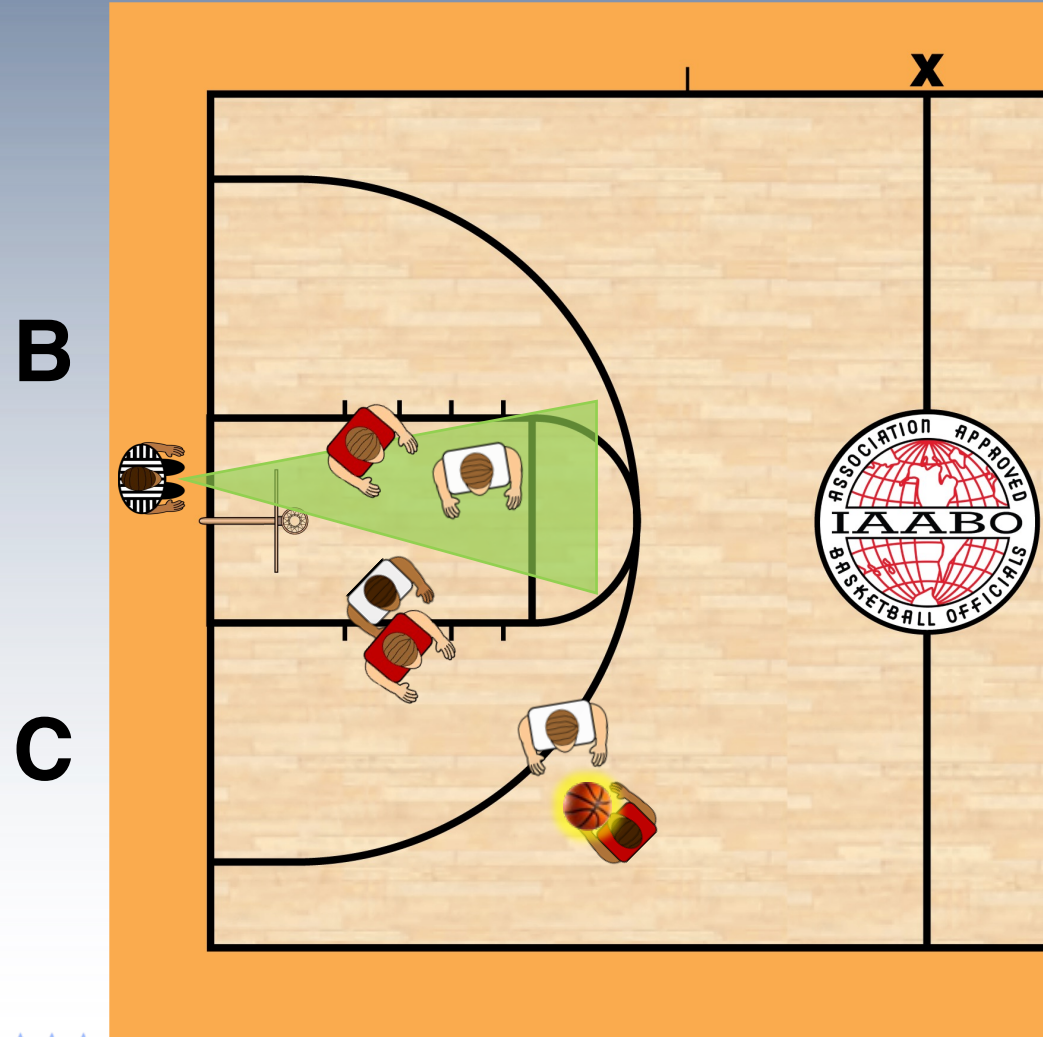
WHEN GOING to “C”

- You need to observe ALL action in the lane!



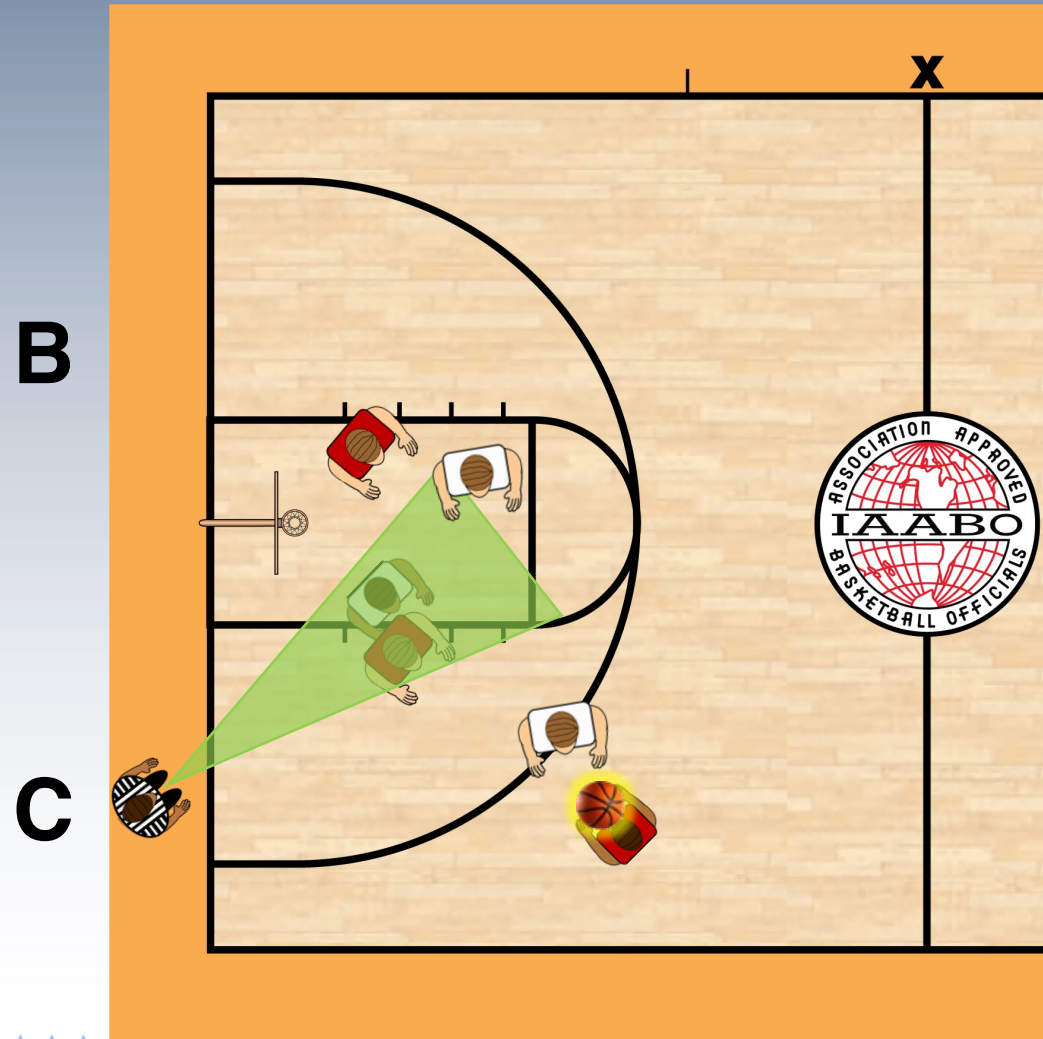
WHEN GOING to “C”

- You need to observe ALL action in the lane!



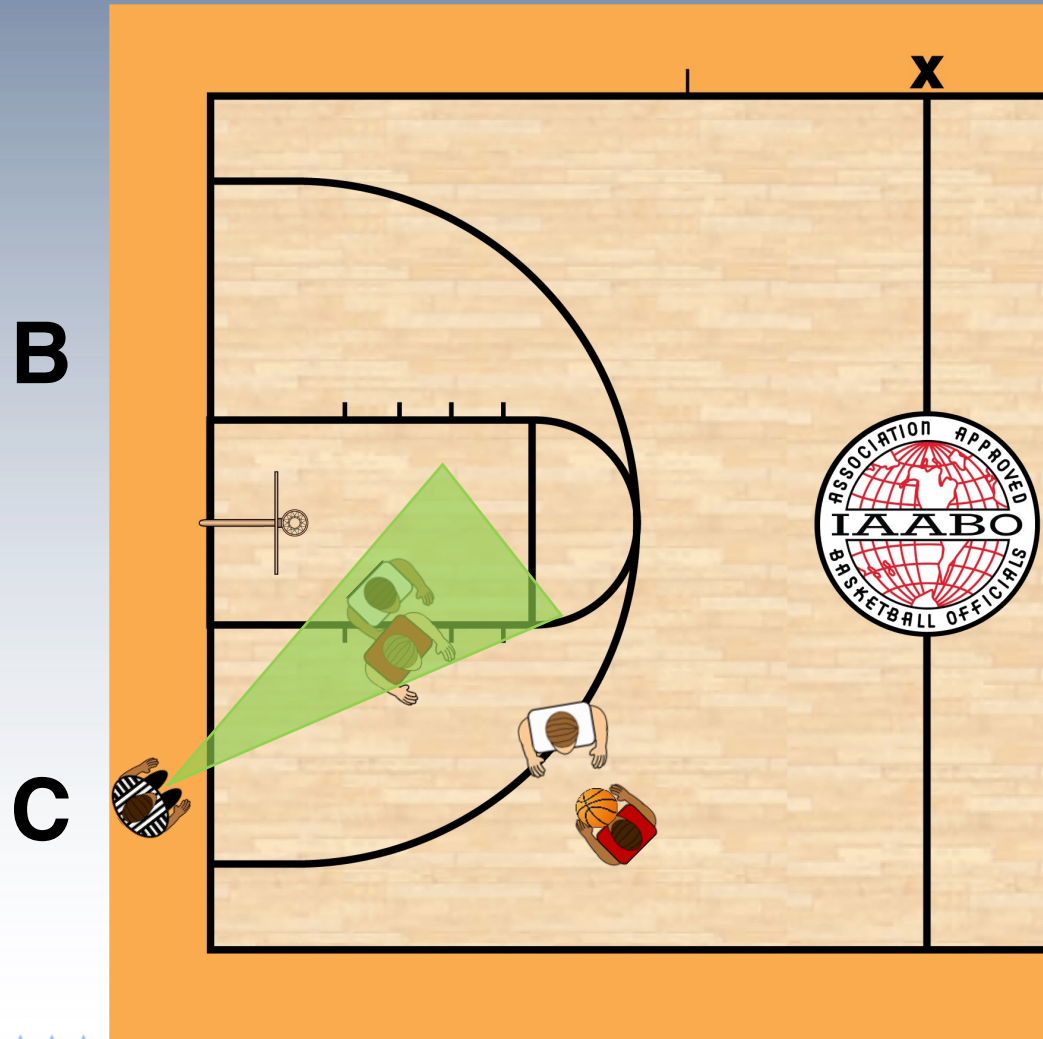
WHEN GOING to “C”

- You need to observe ALL action in the lane!



WHEN AT “C”

- At “C”...Body/shoulders at 45-degree angle looking INTO the lane





DRIVES TO BASKET

LEAD “**POSITION-ADJUST**” ON DRIVE

- If in the closed-down (B position) when a drive to the basket takes place on the Lead’s side of the basket line, the Lead should **position-adjust** toward the sideline to increase their field of vision.



LEAD POSITION-ADJUST ON DRIVE (VIDEO)



Lead

- The Lead should get depth off the end line, if possible.

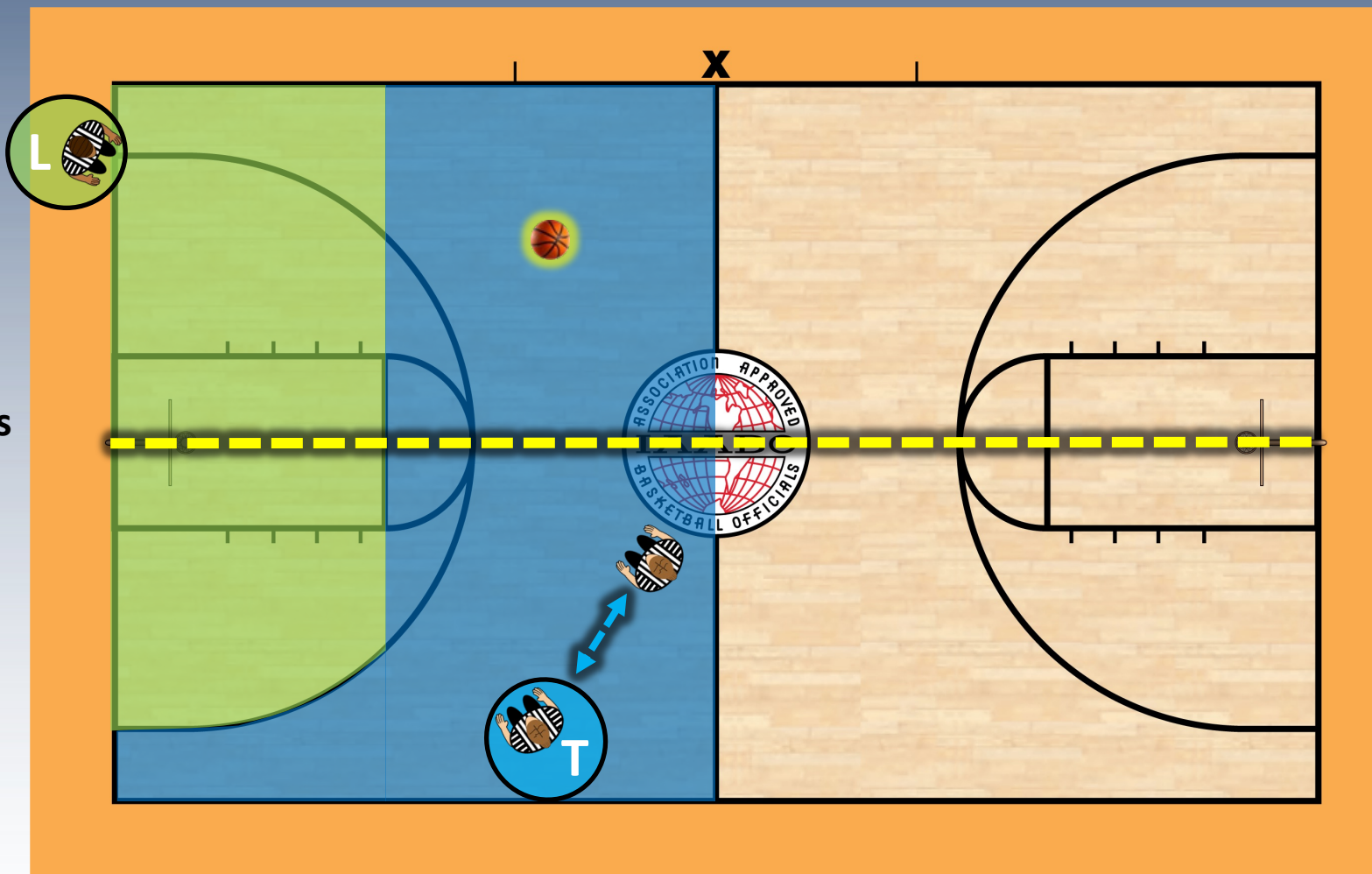
This Lead is getting as much depth as possible.

This gives the Lead a wider cone of vision to see play in the lane and pick up any drives to the basket.



Ball Across Basketline in the Trail's (PCA)

The Lead's PCA expands to include the area beyond the free throw lane and below the free throw line extended, to the 3-point arc. The Lead's focus should be on players in their PCA and on expanding their field of vision to improve coverage.



When the ball is across the basketline in the Trail's PCA, the Trail must focus on the ball and players in their PCA (the Trail works the arc).



Co3...

PCA is DIFFERENT...NEXT Slide

“A” & “B” positions are the same as Co2:

- Body “mirrors” ball location

Ball moves “across the basket line” AND “settles...DECISION TIME

To Rotate or Not?

- NO definitive answer
- Early in game...watch the offense...learn what they do
- In today’s game...many times not much “post play”
- Don’t “chase” the ball

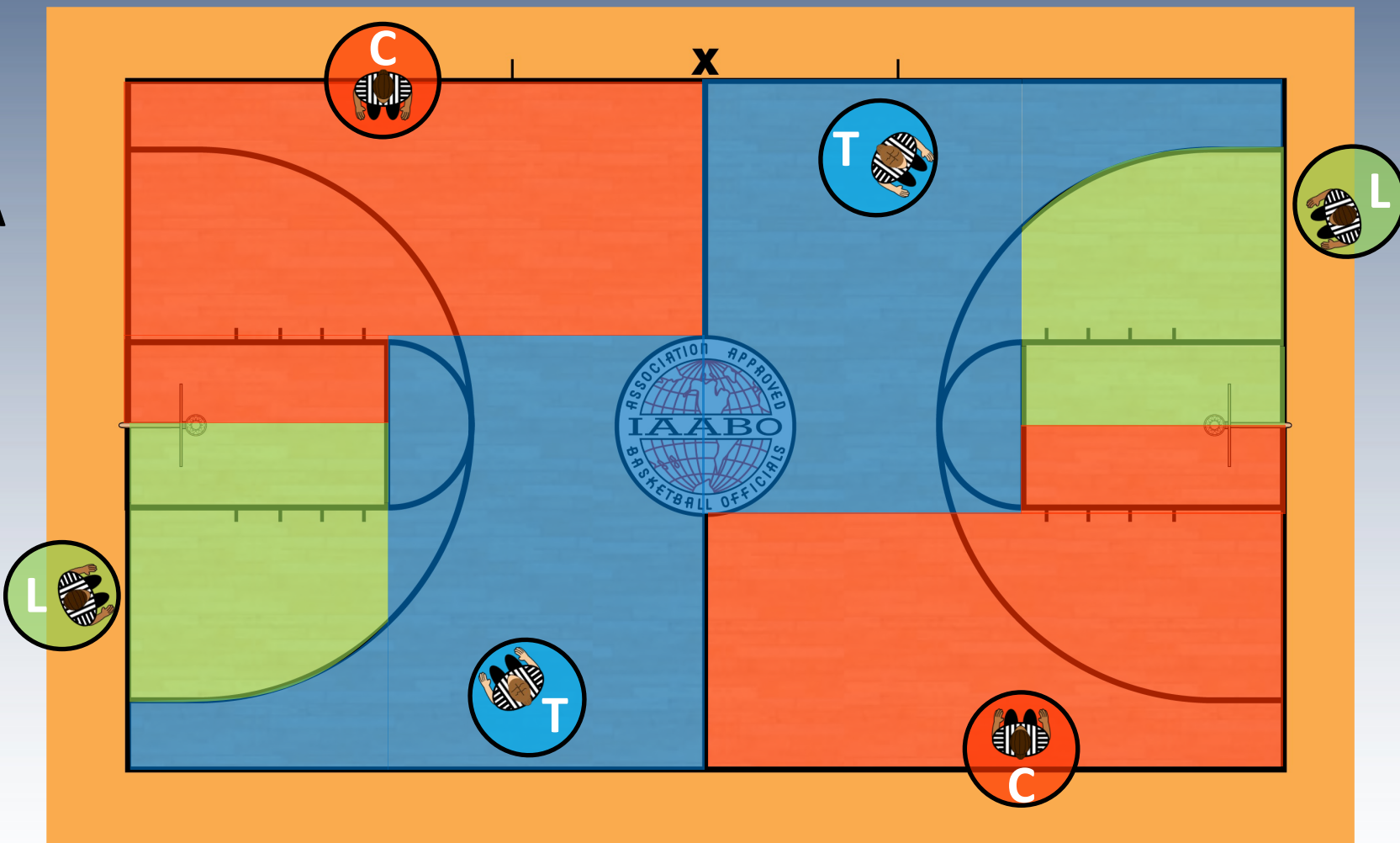


Primary Coverage Area (PCA)

Green – Lead's PCA

Blue – Trail's PCA

Orange – Center



At times, a play may necessitate a crew member to expand their field of vision.



Co3 Rotation

IF you decide to rotate...

- Ensure crew is in front court
- GO with pace
- NO rotation on drives, shots, or “skip” pass back to Lead’s side
- Rotation “complete” when Lead crosses the “farther” lane line
- OK to “abort” rotation

Center “can” initiate a rotation...only a rotation IF Lead recognizes and adjusts

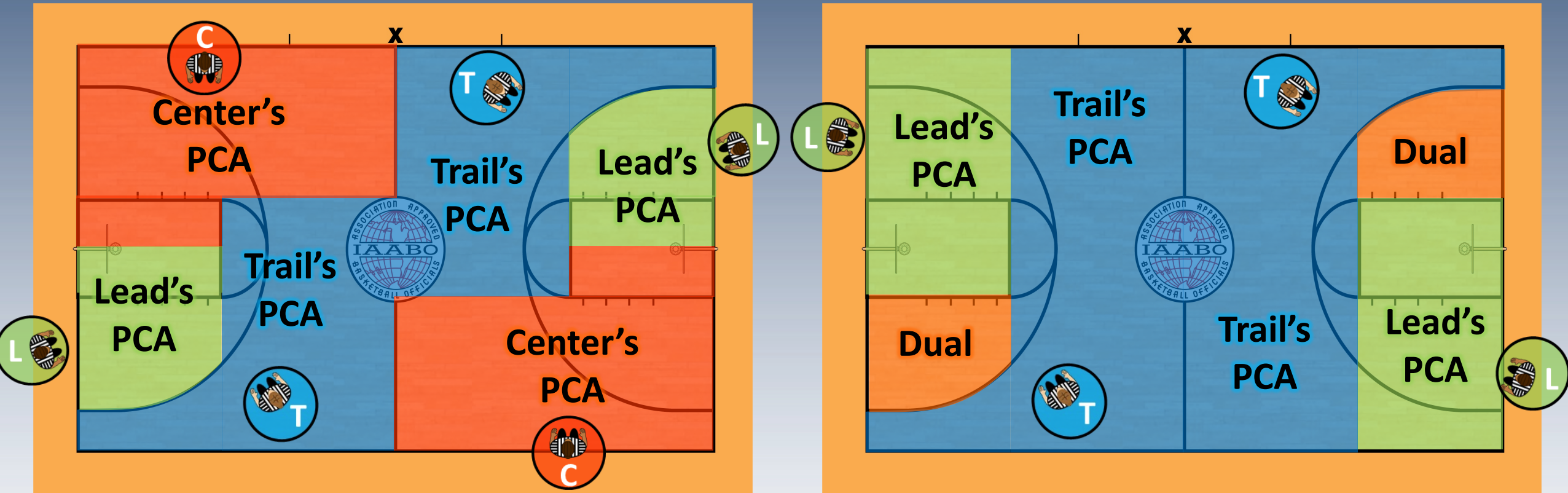


Co2 vs Co3 PCA Differences

- Lead only responsible for **HALF** of LANE (C has “other” half)
- NO 3-pt try responsibilities (Secondary coverage)



Crew of 3 vs. Crew of 2 PCA's



At times, a play may necessitate a crew member to expand their field of vision.

Transition: "Old" Lead to "New" Trail: Co2

- IF "Ballside/C" ...go back across the court and up the sideline.
- NO "rotations" in Co2
- Catch the players...sense of urgency
- Trail means "behind" the ball...do not run ahead of the players
- Position in back court is dependent on players' positions on the court
 - May need to go toward middle of court to officiate play on "far side" of the court
- Get to "new Trail's" ISP (at or below 28')



Transition: "Old" Lead to "New" Trail: Co3

- Catch the players...sense of urgency
- Trail means "behind" the ball...do not run ahead of the players
- Stay "sideline" oriented...C can help on "far side" of the court
- Get to "new Trail's" ISP (at or below 28')



Conclusion

- Positioning is key to accurate play calling
- Know the PCAs for BOTH Co2 and Co3
- Know the ISPs and how/when to move between “A,” “B,” & “C/Ballside”
- Move with URGENCY
 - In Transition to “new Lead”...GET to the endline, get depth & ready to “accept the play”
 - In Transition to “new Trail”...Catch the players, but stay behind them



COLONOSCOPY

- My Annual reminder...GIT R DUN



What Questions Do You Have?

Contact Info: dan.shepardson2022@gmail.com

Thanks...Have a GREAT SEASON!

